

**icare**  
Medical Group

**CURVEX<sup>®</sup> TECHNOLOGY**



*Transforming the daily  
lives of people in need.*

# WHAT IS CURVEX<sup>®</sup> ?



Icare Beds with proprietary CurveX<sup>®</sup> Technology feature **impact-dispersing** rounded corners, **protecting** delicate skin, shins, and toes, while ensuring smoother navigation and **preventing** wheelchair users from catching on the edges.





## IMPROVED SAFETY

- Superior Skin Shear prevention
- Advanced Shin Protection
- Softer touch for Foot and Toe safety
- Impact-Dispersing to protect skin, shins and toes

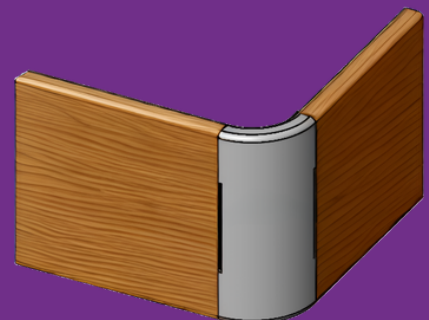


## AESTHETICALLY ENHANCED

- Rounded corner looks cleaner than square
- Radius Edge softens overall look and feel of the bed
- More Space efficient and ergonomic for wheel chair users

## 43% LIGHTER & STRONGER

- Better Stability for transfers and accessories
- Cross-ply with Higher Torque resistance when using rails
- 43% lighter than previous side panels



# CURVEX® - THE WHY AND HOW

Following extensive feedback from our key stakeholders to offer an improved and safer corner design for our homecare beds, we undertook months of rigorous design, prototyping and testing before landing on the final design we are launching as CurveX®.

## HOW TO ORDER

### SCRIPTING:

CurveX® is available on any new orders of our homecare adjustable bed bases including: IC100, IC111, IC280, IC333, IC555 and IC777. We have updated our Bed Package Script Form to include the option of CurveX® corners in section 4.

### ORDERING:

Add Code: ICCX as line item for independent beds (LS, KS, D, Q, SQ)  
Add Code: PSCX as line item for Partner Setups (i.e. IC100LS + IC333LS)

**4. Bed Corner Design**

CurveX®



Standard




Scan to download form.

## ORDERING CODES

To order your upgraded bed to CurveX® Bed Corners, this will need to be specified at time of order placement.



CurveX® independent  
Bed Corner  
Code: ICCX



CurveX® Partner Set-up  
Bed Corner  
Code: PSCX



Transforming the daily lives of people in need.

icaremedicalgroup.com